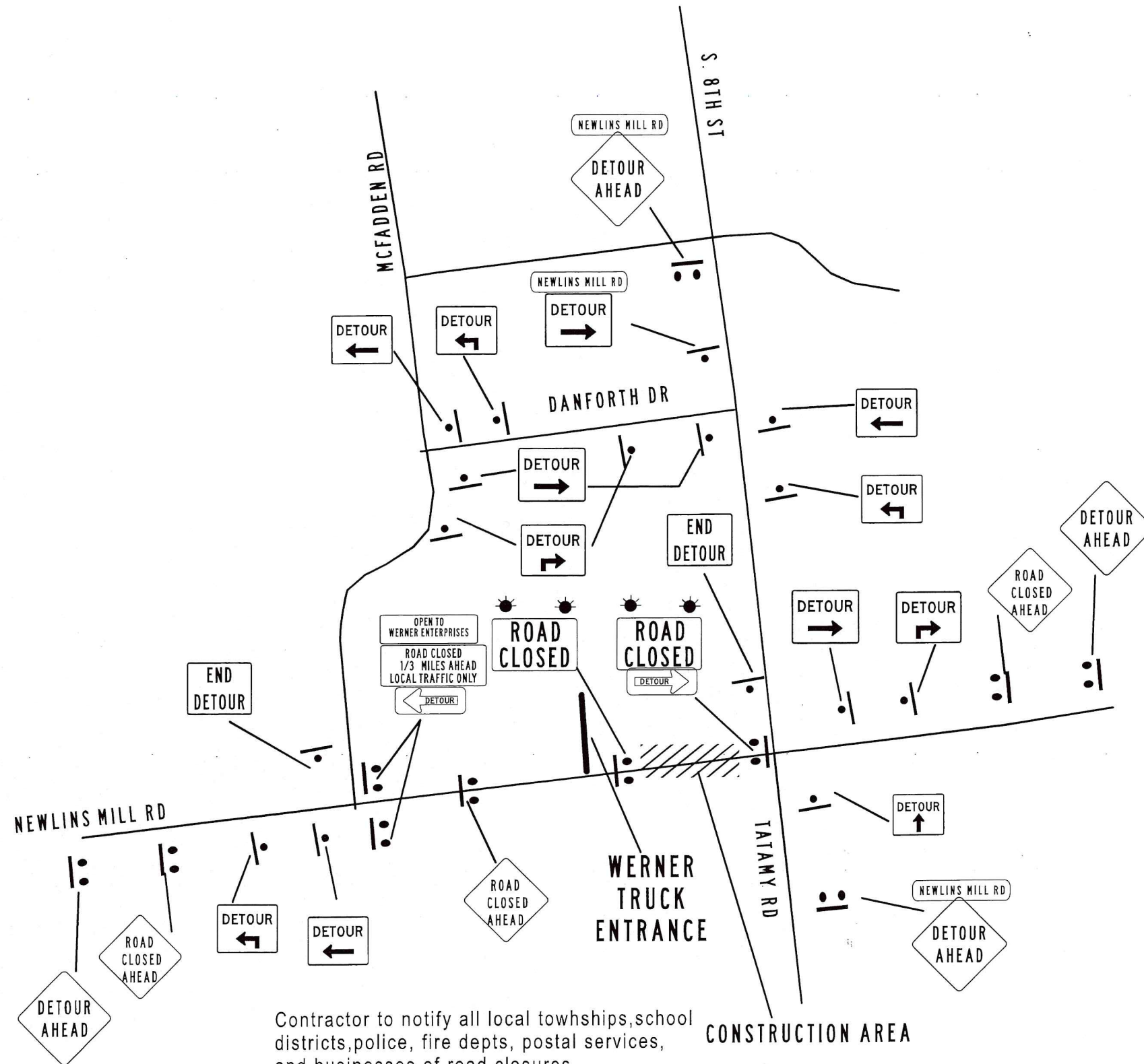


DISTRICT	COUNTY	ROUTE	SECTION	SHEET
5-0	NORTHAMPTON			
REVISION NUMBER			DATE	BY



Contractor to notify all local towships, school districts, police, fire depts, postal services, and businesses of road closures.

CONSTRUCTION AREA

- W20-3 ROAD CLOSED AHEAD 36 X 36
- W20-3 ROAD CLOSED 500 FT 36 X 36
- W20-3 ROAD CLOSED 1000 FT 36 X 36
- W20-3 ROAD CLOSED 1500 FT 36 X 36
- W20-3 ROAD CLOSED 1/2 MILE 36 X 36
- W20-2 DETOUR AHEAD 36 X 36
- W20-2 DETOUR 500 FT 36 X 36
- W20-2 DETOUR 1000 FT 36 X 36
- W20-2 DETOUR 1500 FT 36 X 36
- W20-2 DETOUR 1/2 MILE 36 X 36
- M4-9L DETOUR 30 X 24
- M4-9R DETOUR 30 X 24
- M4-9SL DETOUR 30 X 24
- M4-9SR DETOUR 30 X 24
- M4-9L DETOUR 30 X 24
- M4-9L DETOUR 30 X 24
- M4-8A END DETOUR 30 X 24
- M4-10L DETOUR
- M4-10R DETOUR
- TYPE III BARRICADE TO COVER ENTIRE ROADWAY R11-2 ROAD CLOSED 48 X 30
- R11-3A ROAD CLOSED MILES AHEAD LOCAL TRAFFIC ONLY 60 X 30
- R11-3A DETOUR INFO AHEAD 60 X 30
- TO BE PLACED TWO WEEKS PRIOR TO CLOSING THIS ROADWAY TO BE CLOSED FOR CONSTRUCTION
- D1-1 CHURCH RD 48 X 8
- R11-4 ROAD CLOSED TO THRU TRAFFIC 60 X 30
- W20-3 ROAD WORK AHEAD 36 X 36
- W20-3 ROAD WORK AHEAD 36 X 36
- W20-5R RIGHT LANE CLOSED AHEAD 36 X 36
- W4-2R 36 X 36
- B FLASHER

**LEGEND**

- CONSTRUCTION AREA //////////////
- ..... CLOSED LENGTH
- 1.25 MILES ..... DETOUR LENGTH