



PALMER TOWNSHIP POLLUTANT REDUCTION PLAN

PALMER TOWNSHIP, NORTHAMPTON COUNTY, PA

©2023 Herbert, Rowland & Grubic, Inc.
Engineering | Planning | Infrastructure Solutions

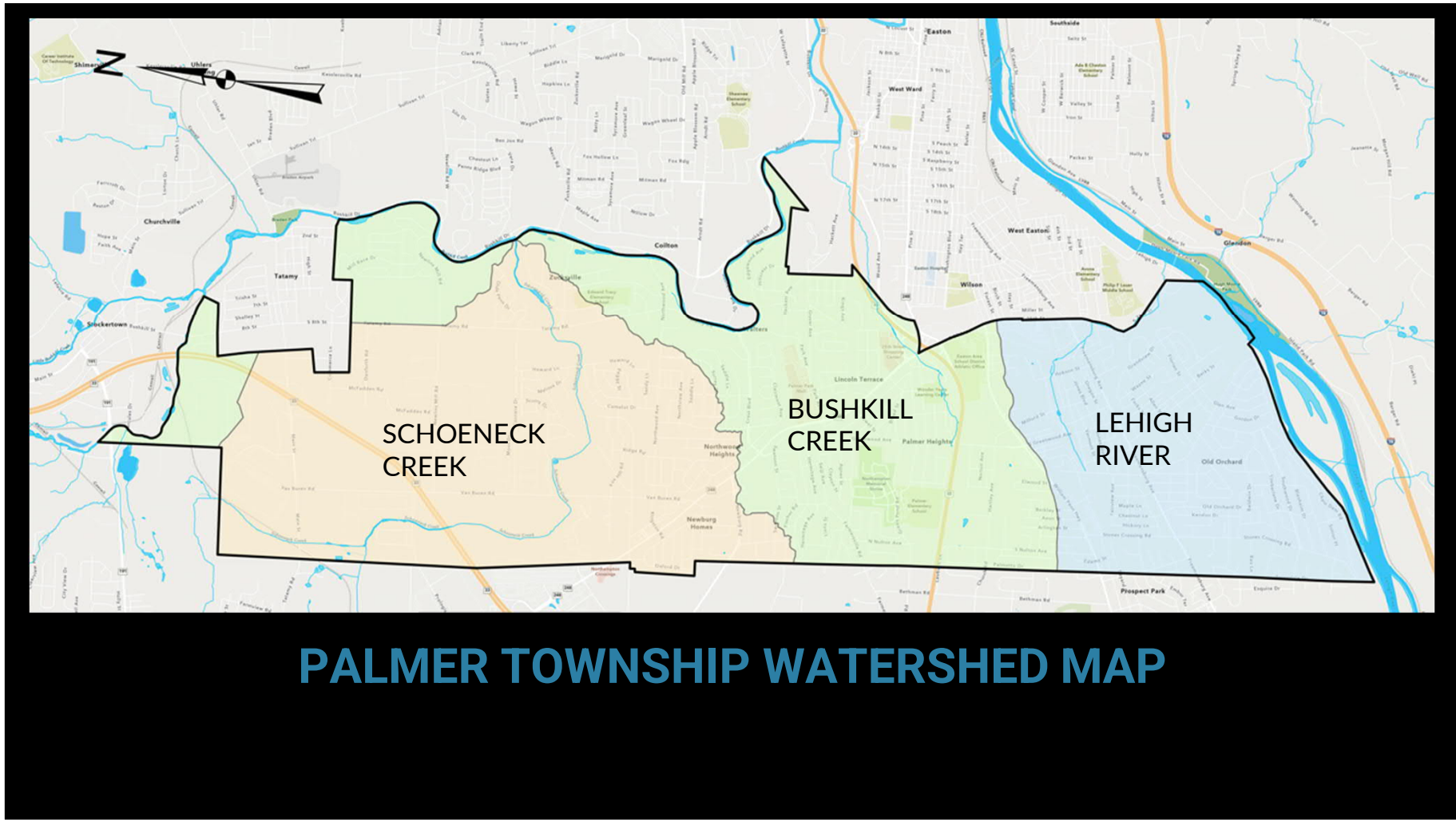
PALMER TOWNSHIP POLLUTANT REDUCTION PLAN



GOALS:

- Meet MS4 Permit sediment reduction requirements by June 1, 2028
 - Lehigh River 109,161 lbs/year
 - Schoeneck Creek 85,602 lbs/year





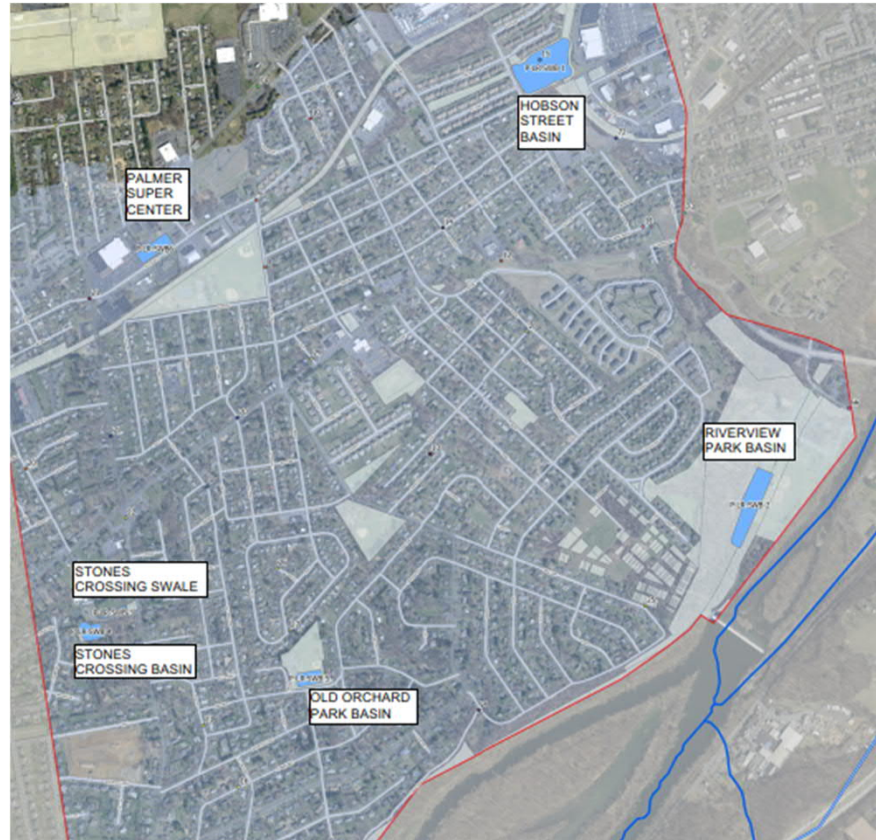
PALMER TOWNSHIP WATERSHED MAP

LEHIGH RIVER POLLUTANT REDUCTION PLAN PROJECTS

- **HOBSON STREET BASIN**
 - 56,945 LBS/YR
- **RIVERVIEW PARK BASIN**
 - 21,270 LBS/YR
- **STONES CROSSING BASIN**
 - 8,026 LBS/YR
- **OLD ORCHARD PARK BASIN**
 - 11,763 LBS/YR
- **PALMER SUPER CENTER**
 - 15,288 LBS/YR
- **REQUIRED REDUCTION**
 - 109,161 LBS/YR
- **PROPOSED REDUCTION**
 - 113,291 LBS/YR



LEHIGH RIVER POLLUTANT REDUCTION PLAN PROJECTS

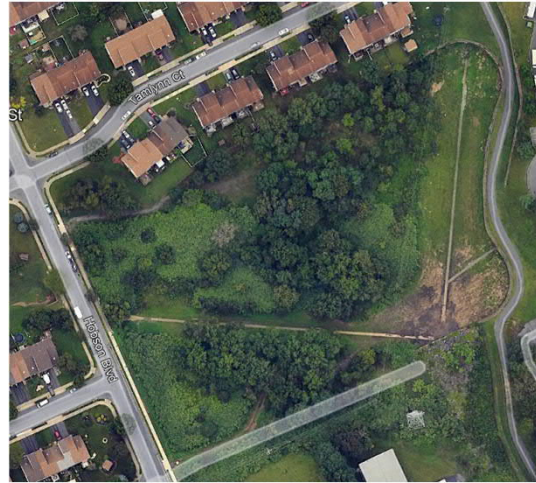


HOBSON STREET BASIN AND SWALE

-DRAINAGE AREA 270.6 ACRES

-59,945 LBS/YR TSS REDUCTION

-ESTIMATE EFFICIENCY 67%



RIVERVIEW PARK BASIN

-DRAINAGE AREA 83.8 ACRES

-21,270 LBS/YR TSS REDUCTION

-ESTIMATE EFFICIENCY 63%

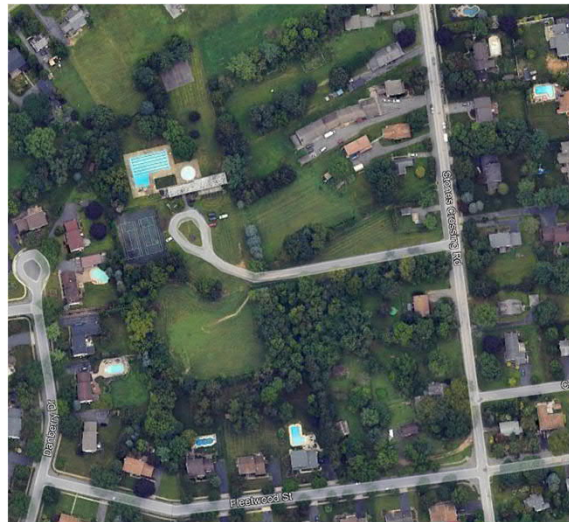


STONES CROSSING BASIN

-DRAINAGE AREA 59.3 ACRES

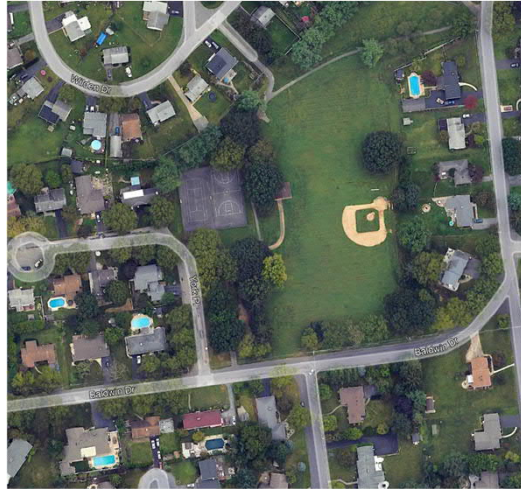
-8,026 LBS/YR TSS REDUCTION

-ESTIMATE EFFICIENCY 58%



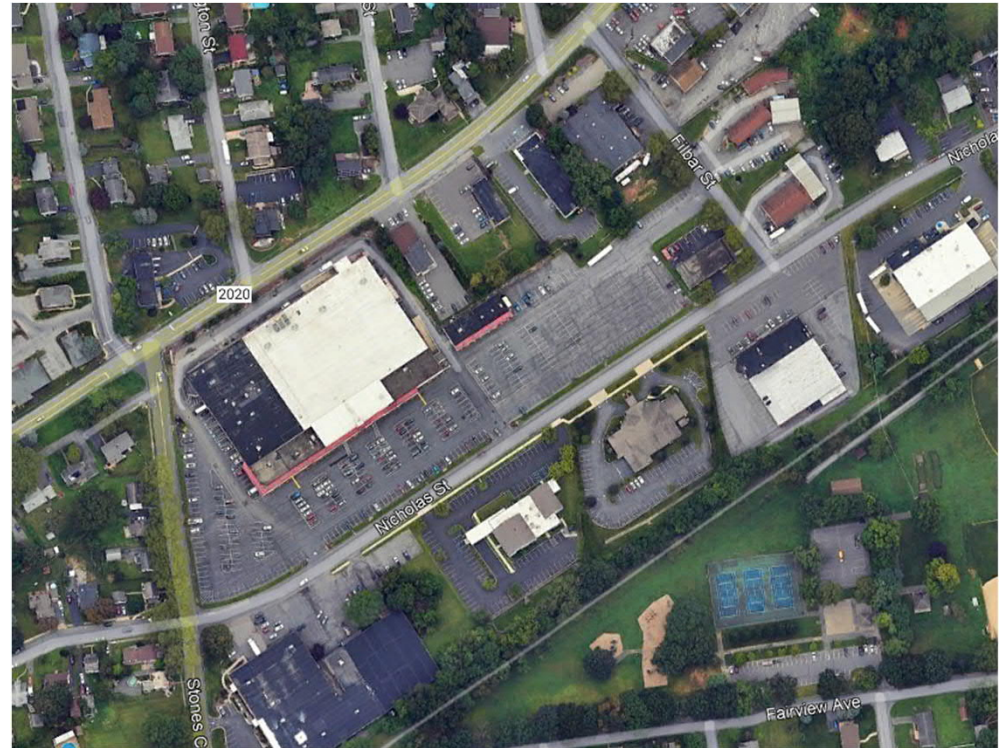
OLD ORCHARD PARK BASIN

- DRAINAGE AREA 19.9 ACRES
- 11,614 LBS/YR TSS REDUCTION
- ESTIMATE EFFICIENCY 78%
- UNDERGROUND FACILITY



PALMER SUPER CENTER

- DRAINAGE AREA 23.5 ACRES
- 15,288 LBS/YR TSS REDUCTION
- ESTIMATE EFFICIENCY 74%
- UNDERGROUND FACILITY

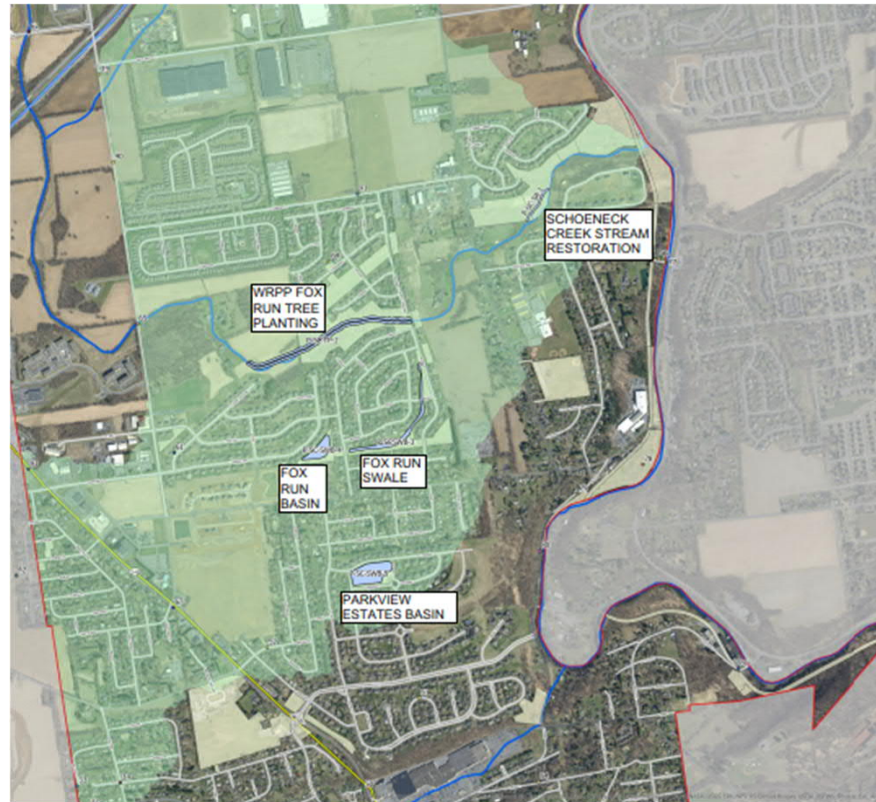


SCHOENECK CREEK POLLUTANT REDUCTION PLAN PROJECTS

- **SCHOENECK CREEK STREAM RESTORATION**
 - 26,928 LBS/YR
- **WRPP FOX RUN TREE PLANTING**
 - 3,672 LBS/YR
- **PARKVIEW ESTATES BASIN**
 - 24,922 LBS/YR
- **FOX RUN BASIN**
 - 21,413 LBS/YR
- **FOX RUN SWALE**
 - 10,802 LBS/YR
- **REQUIRED REDUCTION**
 - 85,603 LBS/YR
- **PROPOSED REDUCTION**
 - 87,738 LBS/YR



SCHOENECK CREEK POLLUTANT REDUCTION PLAN PROJECTS

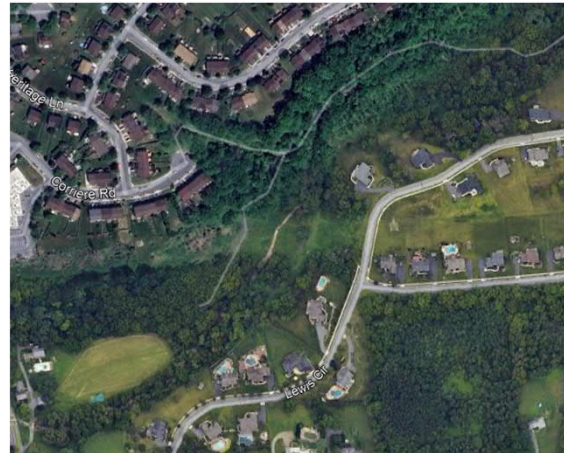


SCHOENECK CREEK STREAM RESTORATION

-600 LINEAR FEET

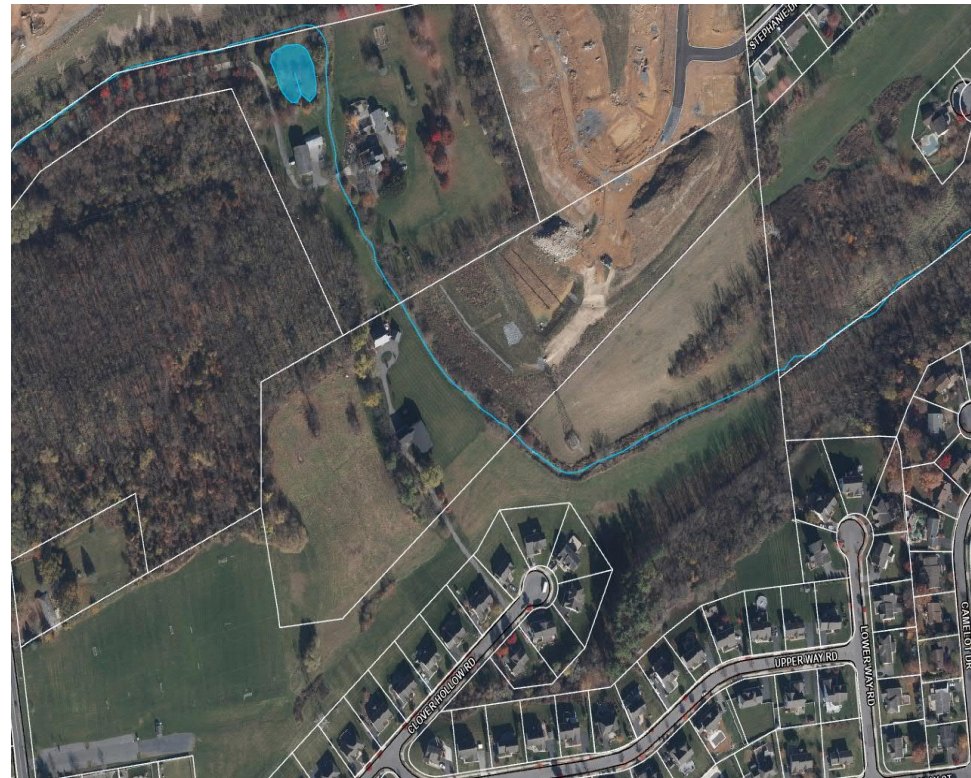
-29,928 LBS/YR TSS REDUCTION

-44.88 LBS/FT



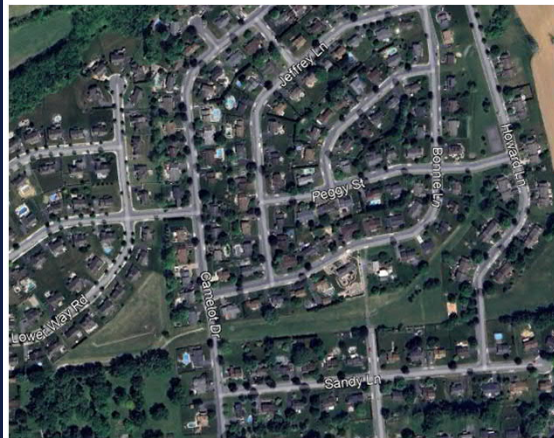
WRPP FOX RUN TREE PLANTING

- DRAINAGE AREA 230.5 ACRES
- 3,672 LBS/YR TSS REDUCTION
- ESTIMATE EFFICIENCY 50%



FOX RUN BASIN

- DRAINAGE AREA 30.5 ACRES
- 21,413 LBS/YR TSS REDUCTION
- ESTIMATE EFFICIENCY 90%



FOX RUN SWALE

- DRAINAGE AREA 167.8 ACRES
 - 10,802 LBS/YR TSS REDUCTION
 - ESTIMATE EFFICIENCY 80%
- RUN BASIN



PALMER TOWNSHIP POLLUTANT REDUCTION PLAN



NEXT STEPS:

- Authority acceptance of HRG recommendations to meet sediment reduction requirements
- HRG provides project assignment for Hobson Street
- HRG provides project assignment for Schoeneck Creek Stream Restoration
- HRG amends previously approved PRP and submits to PADEP
- Remaining PRP project assignments will be provided at a future date

